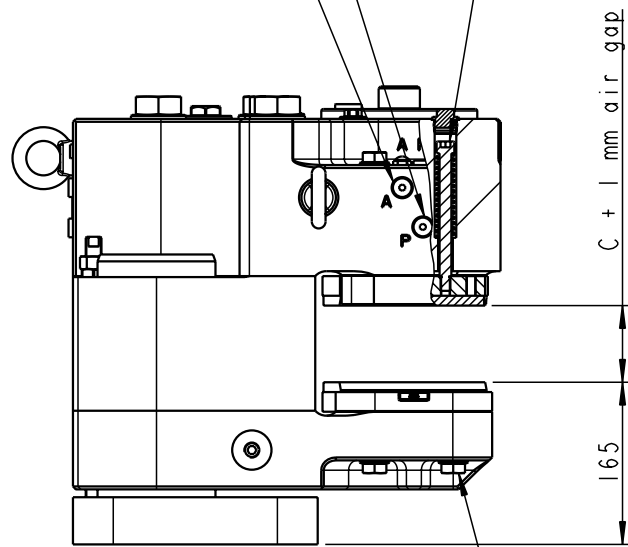
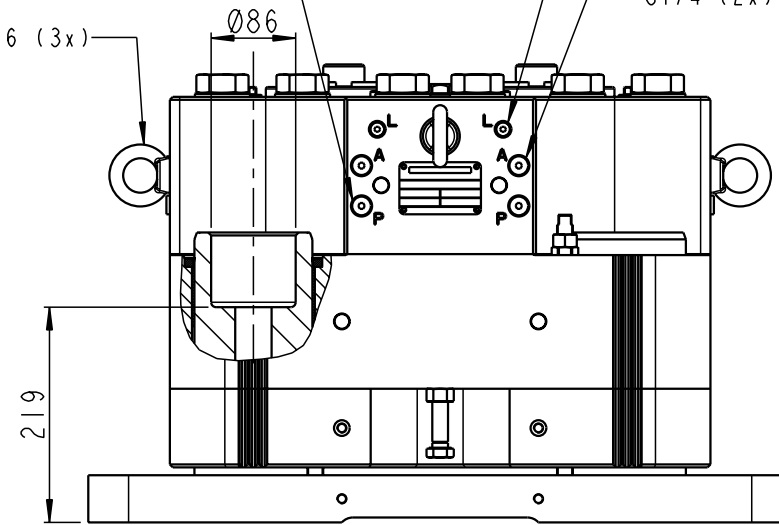


- Pressure port (P) (On both sides) G1/4
- Drain port (A) (On both sides) G1/4
- Bolts M10 Grade A4 (4x) Mv= 27 ± 2Nm Dry

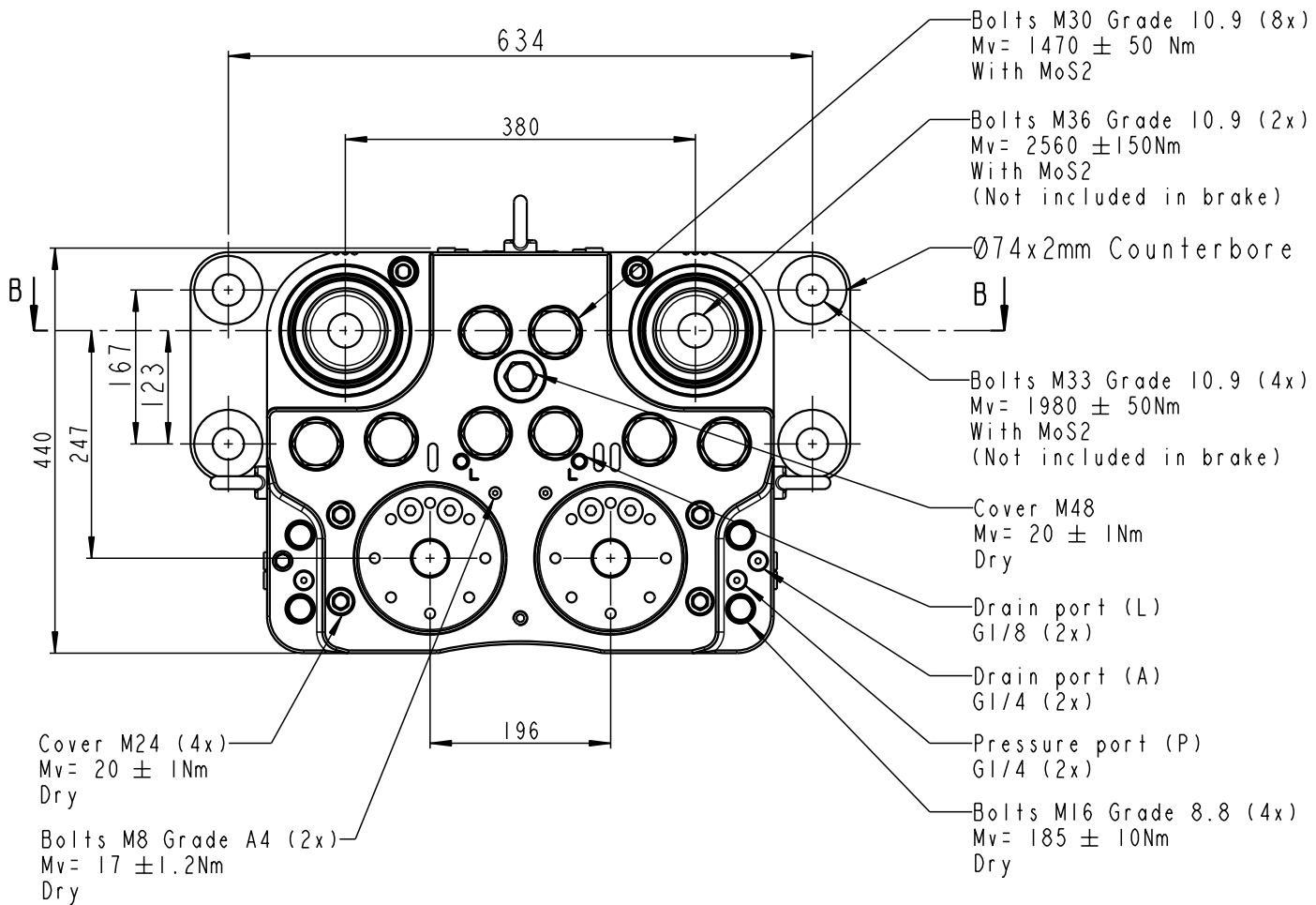


- Bolts M16 Grade 8.8 (4x) Mv= 185 ± 10Nm Dry

- Pressure port (P) G1/4 (2x)
- Drain port (L) G1/8 (2x)
- Drain port (A) G1/4 (2x)
- Eyebolts M16 (3x) WLL: 700kg

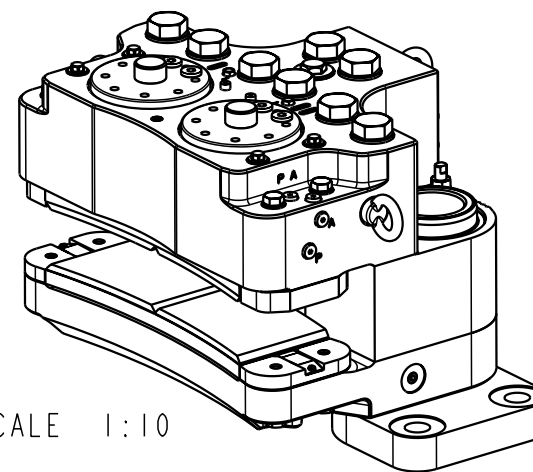


SECTION B-B



- Bolts M30 Grade 10.9 (8x) Mv= 1470 ± 50 Nm With MoS2
- Bolts M36 Grade 10.9 (2x) Mv= 2560 ± 150Nm With MoS2 (Not included in brake)
- Ø74x2mm Counterbore
- Bolts M33 Grade 10.9 (4x) Mv= 1980 ± 50Nm With MoS2 (Not included in brake)
- Cover M48 Mv= 20 ± 1Nm Dry
- Drain port (L) G1/8 (2x)
- Drain port (A) G1/4 (2x)
- Pressure port (P) G1/4 (2x)
- Bolts M16 Grade 8.8 (4x) Mv= 185 ± 10Nm Dry

- Cover M24 (4x) Mv= 20 ± 1Nm Dry
- Bolts M8 Grade A4 (2x) Mv= 17 ± 1.2Nm Dry



Brake can move on shafts:
 Without positioning system mounted: 10mm upwards and 5mm downwards from nominal mounting dimension (165)
 With standard positioning system mounted: 1mm upwards and 1/2 air gap downwards from nominal mounting dimension (165)

C = Brake disc thickness (From 26 to 77mm depending on spacer thickness)
 Mounting data, see drawing: 490-5471
 Weight: Approx. 515-560 kg incl. brake pads

TOLERANCES FOR INTERNAL AND EXTERNAL RADII, ANGLES AND CHAMFERS ACCORDING TO:		ALL DIMENSIONS IN mm	DRAWING STATUS
ISO 2768 - mK		DESCRIPTION BSFI D3000-XXX-MSXXX-101	Released
DRAWN BY ROL	DATE 27-05-2014		
DRAWING NO. 490-5406		REVISION B	SCALE 13:100 (A3)
		SHEET 1 OF 1 SHEETS	